

## ROTARY SWITCH

» *Always for your safety*



*Always for your safety*



**RoHS**

# COMPANY INTRODUCTION

Zhejiang ETEK Electrical Technology Co., Ltd. (Abbreviation: ETEK Electric) is a professional manufacturing company dedicated to the research, development, production, and sales of low-voltage electrical appliances. The company was established in 2011 and is located in Wenzhou City, Zhejiang Province. At present, the company has 40K sqm of modern manufacturing bases in Wenzhou and Wuhu with over 500 employees, including over 50 R&D and technical personnel. ETEK Electric has multiple production workshops for mold design, parts manufacturing, welding, and assembly. Additionally, they have multiple automated production lines for MCB and RCCB. Our products include MCB, RCCB, RCBO, AFDD, MCCB, ACB, EV Chargers, Photovoltaic DC products, etc., which can meet the needs of different countries and are widely used in fields such as residential, commercial, and industrial.

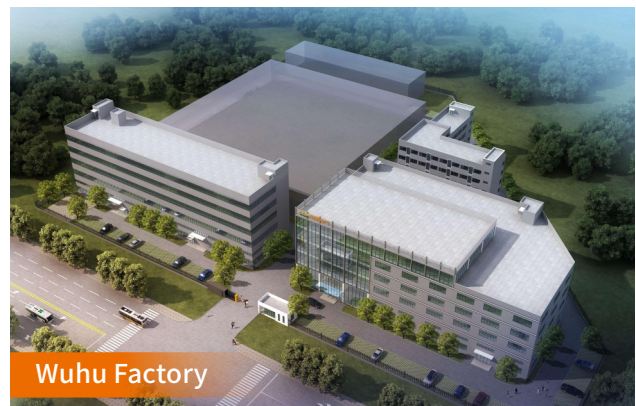
ETEK Electric has passed ISO9001 quality management system and environmental management system certification. The company have built our own low-voltage electrical testing center, and most of the testing items can meet the requirements of international IEC standards, in addition, our products have obtained international CB, TUV, VDE, CE, RoHS and other quality certificates.

ETEK Electric constantly masters and breaks through the core technology of circuit breakers, with more than 100 national patents. Focusing on independent brand construction is crucial for the company's development. The "ETEK" trademark is registered in over 80 countries. Products are exported to over 60 countries and regions including the European Union, South America, the Middle East, Africa, and Southeast Asia.

We also support OEM, ODM, OBM, SKD, CKD and other business cooperation models, and provide customers with a full range of services covering market cultivation, technical training, and factory construction.

ETEK Electric has been adhering to the business policy of "Growth", "Quality", "Efficiency", and "Innovation". In 2023, ETEK Electric has formulated the fifth 3-year strategic plan, which specifies the three major initiatives of expanding the production scale, enhancing the new energy market share, and expanding the independent brand, to realize the annual revenue target of \$50 million by 2026.

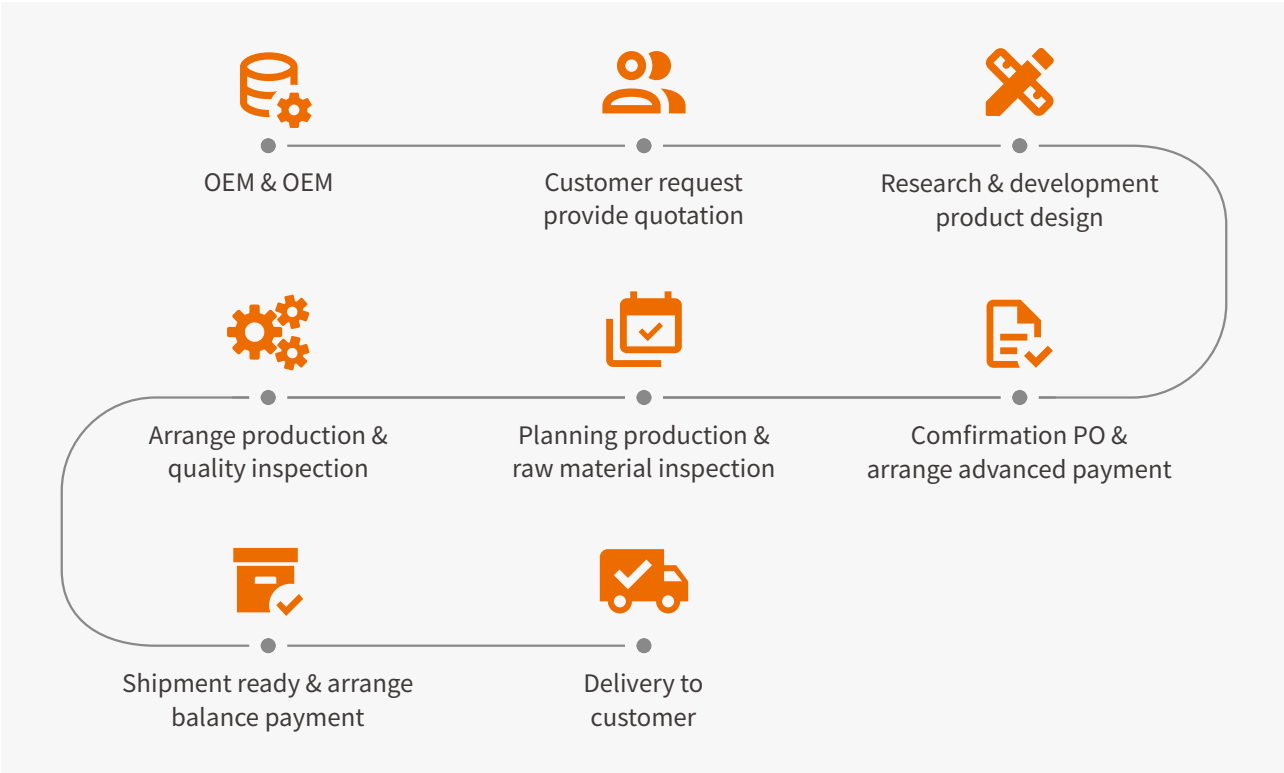
Looking forward to the future, ETEK Electric will be committed to becoming a globally renowned manufacturer in the power distribution and electrical industry, safeguarding the power safety of global customers, and helping the development of green and digital energy.



# WORKSHOPS



# OEM & ODM BUSINESS





# LW26

## Series Rotary Switch



LW26-25A-2P-102



LW26-32A-2P-FOR OFF REV-K



LW26-32A-4P-102DIN



LW26-63A-4P-102

DESCRIPTION	CODE OF FACEPLATE	DIMENSION				INSTALLATION			
		A	B	C	L	E	F	D1	D2
LW26-10	M0SQUARE	30	30	28	22+8n	20		Φ8	Φ3.2
	M1SQUARE	48	48	43	22+9.6n	36	36	Φ8.5	Φ4.5
LW26-20	M1RETANGLE	48	60	43	22+9.6n	36	36	Φ8.5	Φ4.5
	M2SQUARE	64	64	43	25+9.6n	48	48	Φ10	Φ4.5
	M2RETANGLE	64	80	43	25+9.6n	48	48	Φ10	Φ4.5
	M31SQUARE	72	72	43	25+9.6n	55	55	Φ46	Φ4.5
	M1SQUARE	48	48	45.2	23+12.8n	36	36	Φ8.5	Φ6
LW26-25	M1RETANGLE	48	60	45.2	23+12.8n	36	36	Φ8.5	Φ4.5
	M2SQUARE	64	64	45.2	26.5+12.8n	48	48	Φ10	Φ4.5
	M2RETANGLE	64	80	45.2	26.5+12.8n	48	48	Φ10	Φ4.5
	M31SQUARE	72	72	45.2	26.5+12.8n	55	55	Φ46	Φ4.5
	M2SQUARE	64	64	58	29.2+12.8n	48	48	Φ10	Φ4.5
LW26-32	M2RETANGLE	64	80	58	29.2+12.8n	48	48	Φ10	Φ4.5
	M31SQUARE	72	72	58	29.2+12.8n	55	55	Φ68	Φ4.5
	M3SQUARE	88	88	58	29.2+12.8n	68	68	Φ13	Φ4.5
	M2SQUARE	64	64	66	29.2+21.5n	48	48	Φ10	Φ4.5
LW26-63	M2RETANGLE	64	80	66	29.2+21.5n	48	48	Φ10	Φ4.5
	M31SQUARE	72	72	66	29.2+21.5n	55	55	Φ68	Φ4.5
	M3SQUARE	88	88	66	29.2+21.5n	68	68	Φ13	Φ6
	M3SQUARE	88	88	84	35+26.5n	68	68	Φ13	Φ6
LW26-125	M3SQUARE	88	88	84	35+26.5n	68	68	Φ13	Φ6
LW26-160	M3SQUARE	88	88	88	35+32.5n	68	68	Φ13	Φ6

ps: "P" - Contact Pins. Same as Bellow.

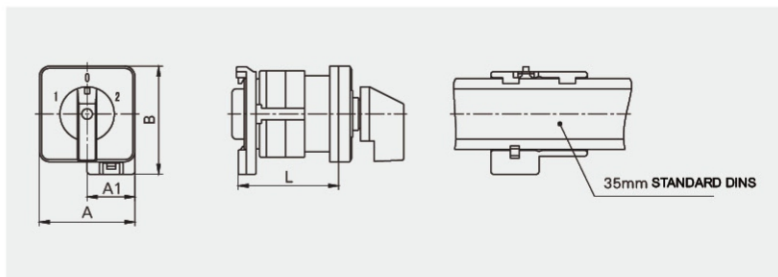
DIN-Rail Mounting(D2)



LW26-125A-3P-102



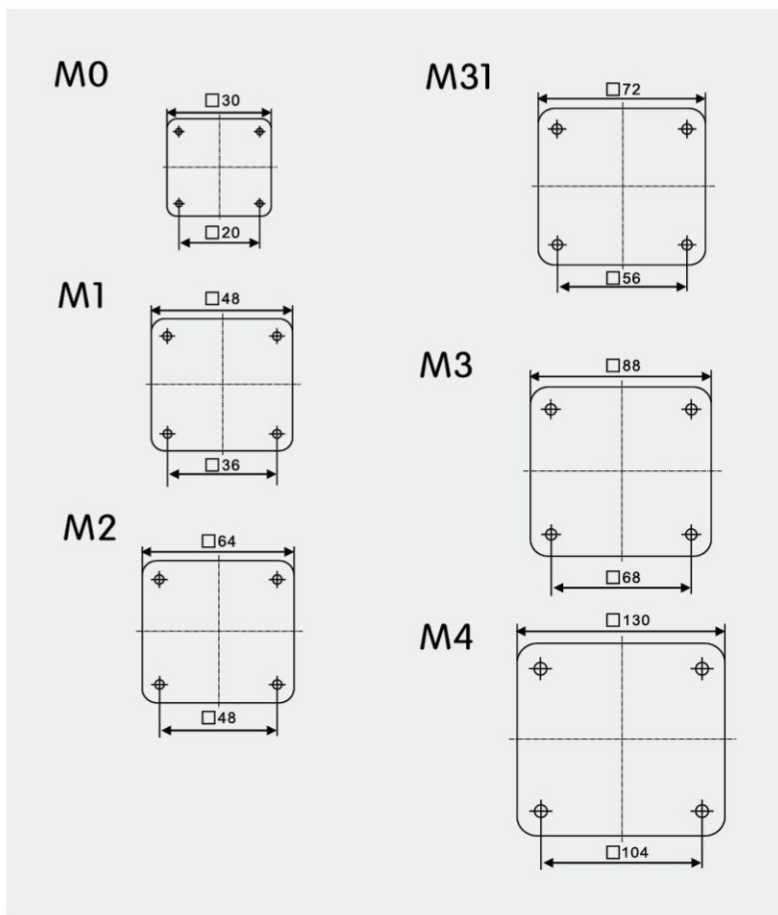
LW26-160A-3P-102



DESCRIPTION	DIMENSION				INSTALLATION
	A	A1	B	L	
LW26-20	□ 48	24	54	31+9.6n	35mm STANDARD DINS
LW26-25	□ 48	24	54	32+12.8n	35mm STANDARD DINS
LW26-32F	□ 48	24	54	32+14n	35mm STANDARD DINS
LW26-32	□ 64	35	60	40+12.8n	35mm STANDARD DINS
LW26-63	□ 64	35	60	40+21.5n	35mm STANDARD DINS
LW26-125	□ 88	35	60	51+26.5n	35mm STANDARD DINS
LW26-160	□ 88	35	60	51+32.5n	35mm STANDARD DINS

Plate and Handle

Code of Faceplate



### Code of Handle

STYLE	CODE OF FACEPLATE M0 M1 M2 M3	STYLE	CODE OF FACEPLATE M0 M1 M2 M3
R	● ● ● ● ●	I	● ● ● ● ● ● ●
R2	● ●	B	● ● ● ● ●
F	● ● ●	L	●
H	●	O	●
P	● ●	K	● ●

ps: - ● STANDARD COLOR, ● OPTIONAL COLOR. SAME AS BELLOW.

DESCRIPTION	CODE OF FACEPLATE								CODE OF HANDLE										DEGREE OF ROTATION				MAX STAGES			
	M0	M1	M1B	M2	M2B	M3	M3	M4	R	R2	F	I	B	H	L	O	P	K	30°	45°	60°	90°	12	10	8	
LW26-10	●										●	●							●	●	●	●			●	
LW26-20		●	●	●	●		●		●	●	●	●	●	●	●	●	●	●	●	●	●	●	●			
LW26-25		●	●	●	●		●		●	●	●	●	●	●	●	●	●	●	●	●	●	●	●			
LW26-32				●	●	●	●		●	●	●	●		●	●	●	●	●	●	●	●	●	●			
LW28-63				●	●	●	●		●	●	●	●		●	●	●	●	●	●	●	●	●				●
LW26-125									●								●	●	●		●	●				●
LW26-160									●								●	●	●		●	●				●

ps:-M1B/M2B PLATE MOUNTING FOR SELF TAPPING SCREW.

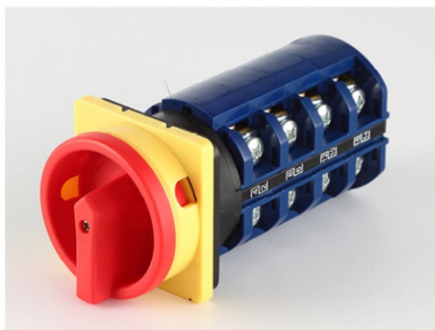




LW26-20A-2P-GS



LW26-32A-4P-GS



LW26-64A-4P-GS

Detail

CURRENT SCOPE: 10A 20A 25A 32A 63A 125A 160A

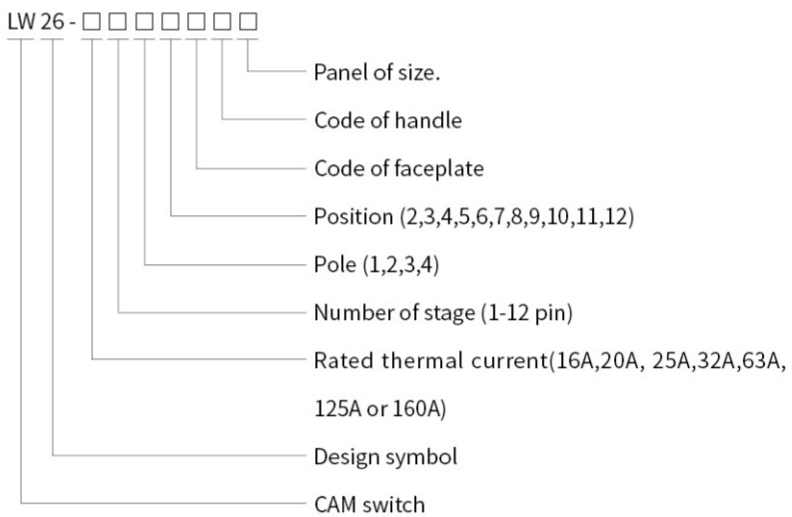
MAX VOLTAGE : 690VAC

Poles: 1/2/3/4

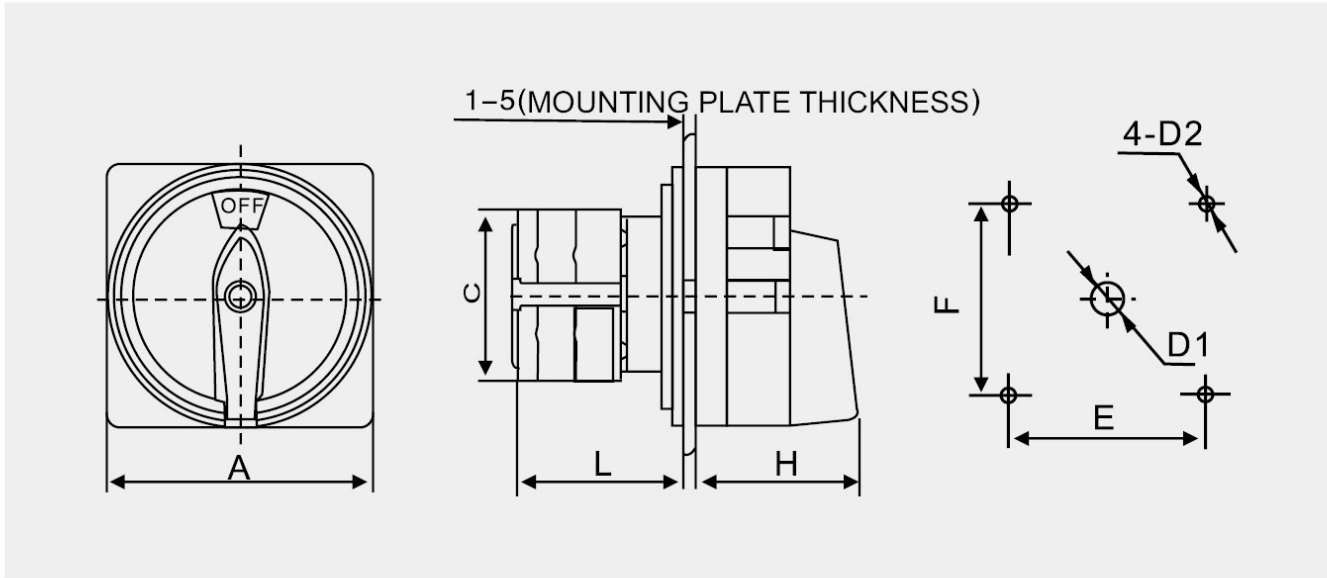
Max pins: 12

CCC CE CERTIFIED

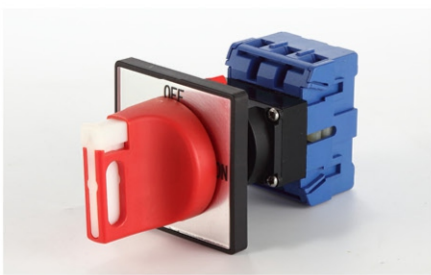
Description



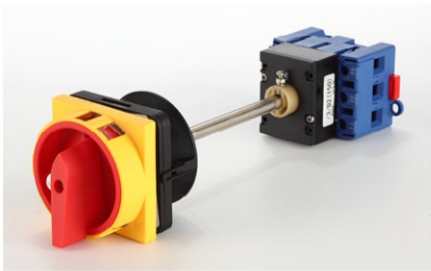
### Dimension Installation Size



DESCRIPTION	CODE OF FACEPLATE	DIMENSION				INSTALLATION			
		A	C	L	H	E	F	D1	D2
LW26GS-20/04-1	M1	□ 48	43	42	33	36	36	φ8.5	φ4.5
LW26GS-20/04-2	M2	□ 64	43	43	42	48	48	φ10	φ4.5
LW26GS-25/04-1	M1	□ 48	45.2	50	33	36	36	φ8.5	φ4.5
LW26GS-25/04-2	M2	□ 64	45.2	51	42	48	48	φ10	φ4.5
LW26GS-32/04-2	M2	□ 64	58	55	42	48	48	φ10	φ4.5
LW26GS-32/04-3	M4	□ 88	58	55	52	68	68	φ13	φ6
LW26GS-63/04-2	M2	□ 64	66	72.5	42	48	48	φ10	φ4.5
LW26GS-63/04-3	M4	□ 88	66	72.5	52	68	68	φ13	φ6
LW26GS-125/04-3	M4	□ 88	84	88	52	68	68	φ13	φ6
LW26GS-160/04-3	M4	□ 88	88	100	52	68	68	φ13	φ6



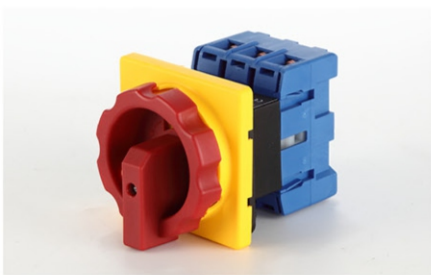
LW30-32A-3-OMI-GSD



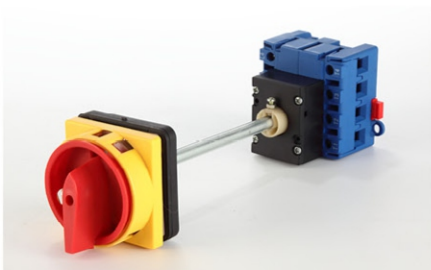
LW30-63-3-3D2(105)



LW30-63-4-GSD



LW30-63-4P-GSM



LW30-100-4P-D2(105)

**Detail**

CURRENT SCOPE: 20A 25A 32A 40A 63A 80A 100A

MAX VOLTAGE : 690VAC

Poles: 1/2/3/4

Max pins: 3+P

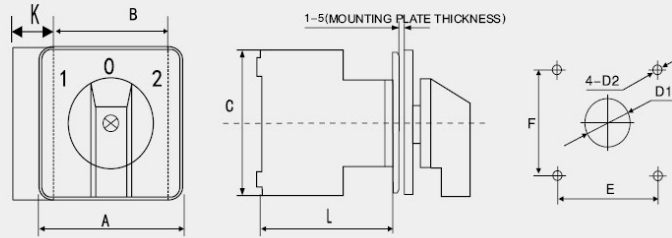
CCC CE CERTIFIED

**Description**

LW 30 - □ □ □ □ □ □ □ □

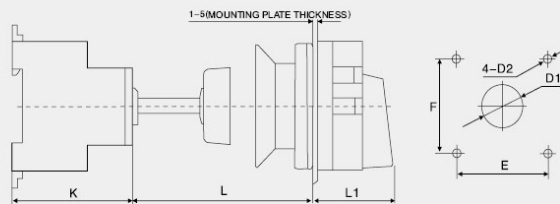
- Panel of size.
- Code of handle
- Code of faceplate
- Position (2,3,4,5,6,7,8,9,10,11,12)
- Pole (1,2,3,4)
- Number of stage (1-12 pin)
- Rated thermal current(16A,20A, 25A,32A,63A, 125A or 160A)
- Design symbol
- CAM switch

## LW30 Plate Mounting



DESCRIPTION	DIMENSION				INSTALLATION			
	A	B	C	L	E	F	D1	D2
LW30-25/32	□ 64	13.5	42.5	55	48	48	Φ10	4.5
LW30-40/63	□ 64	16	50	62	48	48	Φ10	4.5
LW30-80/100	□ 64	22	70	71	48	48	Φ10	4.5

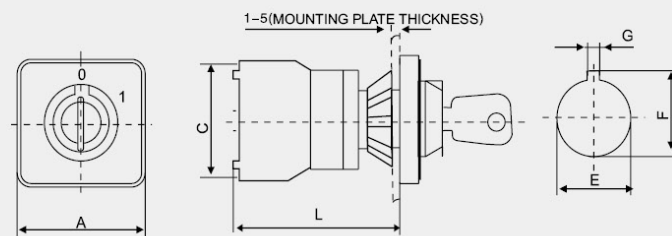
## LW30 Interlock Rail Installation(50/100/150/200)



DESCRIPTION	DIMENSION(mm)			INSTALLATION(mm)			
	K	L1	L	E	F	D1	D2
LW30-20	50	32	150	48	48	Φ22	Φ4.2
LW30-25	50	32	150	48	48	Φ22	Φ4.2
LW30-32	50	32	150	48	48	Φ22	Φ4.2
LW30-40	61	32	150	48	48	Φ22	Φ4.2
LW30-63	61	32	150	48	48	Φ22	Φ4.2
LW30-80	68	32	150	48	48	Φ22	Φ4.2
LW30-100	68	32	150	48	48	Φ22	Φ4.2

ps: BOTTOM BE MOUNTED IN RAIL OF 35MM

## LW30 Single Hole Installation



LW30-□/0MS LW30-□/0M1

DESCRIPTION	DIMENSION			INSTALLATION		
	A	C	L	E	F	G
LW30-20/25	□ 49	54	73	Φ22.5	24.1	3.2
LW30-32	□ 49	54	73	Φ22.5	24.1	3.2
LW30-20/25	□ 62	54	73	Φ22.5	24.1	3.2
LW30-32	□ 62	54	73	Φ22.5	24.1	3.2



LW31-16-2P-102



LW31-32-2P-102



LW31-50-2P-102



LW31-75-2P-102

Detail

CURRENT SCOPE: 10A 20A 25A 32A 63A 125A 160A

MAX VOLTAGE : 690VAC

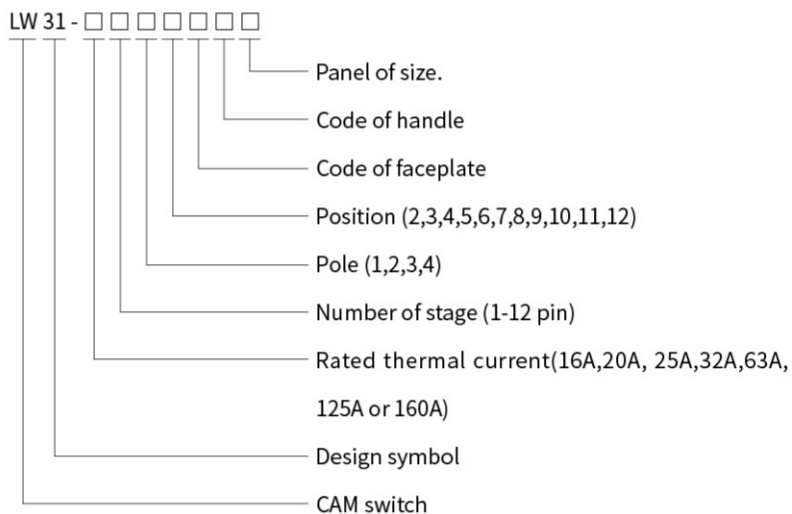
Poles: 1/2/3/4

Max pins: 12

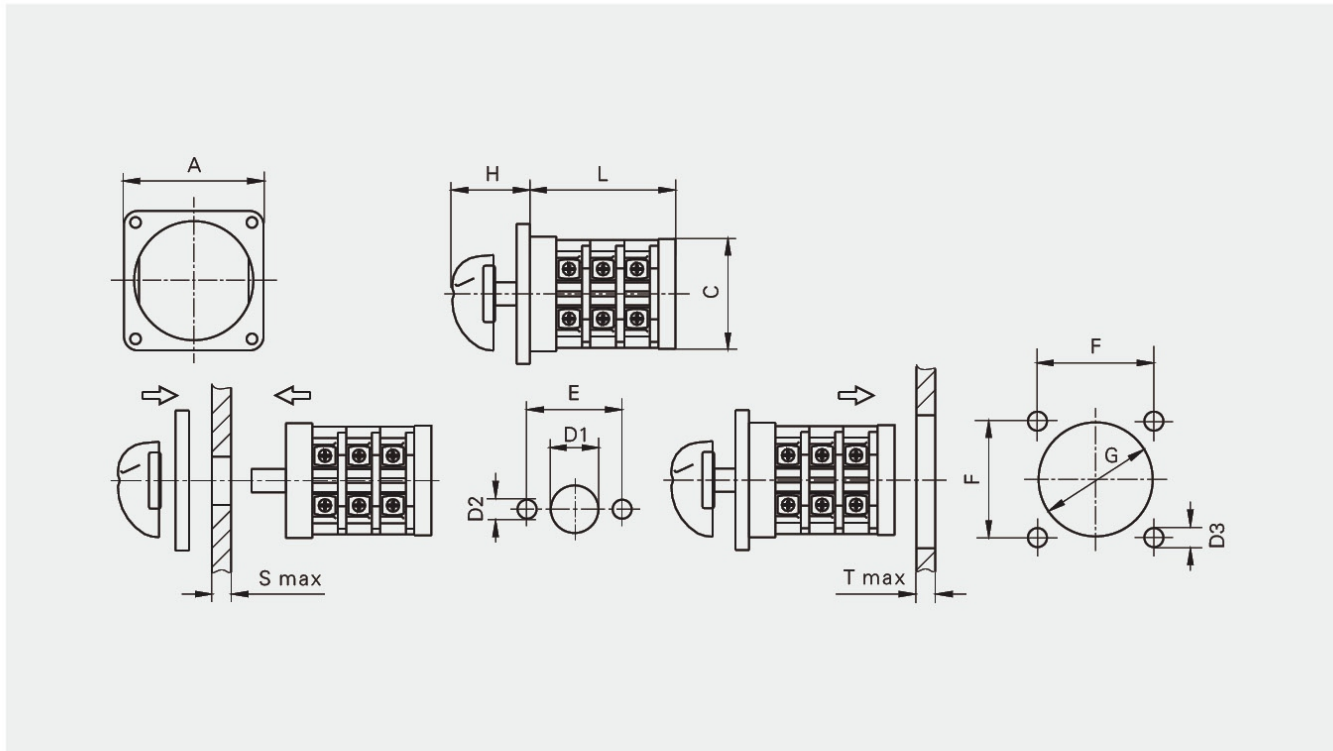
CCC CE CERTIFIED

Function: Ammeter, Voltmeter, OFF-ON, 0-1, 1-0-2, A-O-M, FOR-OFF-REV, O-Y-  $\Delta$ ,  $\Delta$  -Y-O-Y-  $\Delta$ , 0-1-Star, Multi-step switches and so on .

Description



### Dimension Installation Size



DESCRIPTION	CODE OF FACEPLATE	DIMENSION(mm)				INSTALLATION(mm)						
	A	C	H	L	E	D1	D2	S	F	G	D3	T
LW31-20	□ 54	□ 44	38	25+12n	32	Φ9.5	Φ3.2	1.5	35	Φ45	Φ4.5	6
LW31-20	□ 72	□ 44	38	25+12n	32	Φ9.5	Φ3.2	1.5	58	Φ45	Φ4.5	6
LW31-25	□ 72	□ 59	36	23+13n	33	Φ9.5	Φ3.2	1.5	58	Φ64	Φ4.5	6
LW31-25	□ 105	□ 59	53	23+13n	33	Φ9.5	Φ3.2	1.5	85	Φ64	Φ4.5	6
LW31-32	□ 72	□ 59	36	23+18n	33	Φ9.5	Φ3.2	1.5	58	Φ64	Φ4.5	6
LW31-32	□ 105	□ 59	53	23+18n	33	Φ9.5	Φ3.2	1.5	85	Φ64	Φ4.5	6
LW31-50	□ 105	□ 80	53	34+18n	46	Φ13	Φ5.3	3	85	Φ90	Φ5.5	8
LW31-75	□ 105	□ 80	53	34+27n	46	Φ13	Φ5.3	3	85	Φ90	Φ5.5	8



LW26-16-2P-BYR



LW26D-16-2P-ON-OFF-ON



LW26D-16-3P-AMMETER



LW26D-16-3P-VOLTMETER

Detail

CURRENT SCOPE: 16A 20A 40A 63A 125A

MAX VOLTAGE : 690VAC

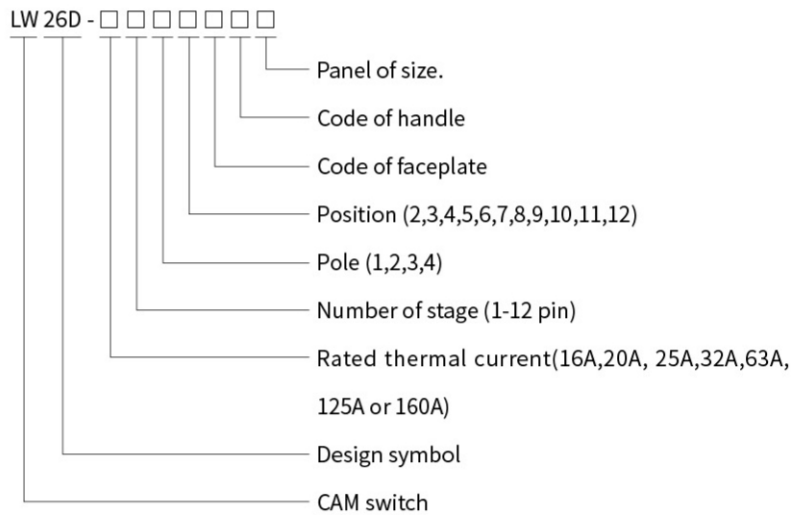
Poles: 1/2/3/4

Max pins: 12

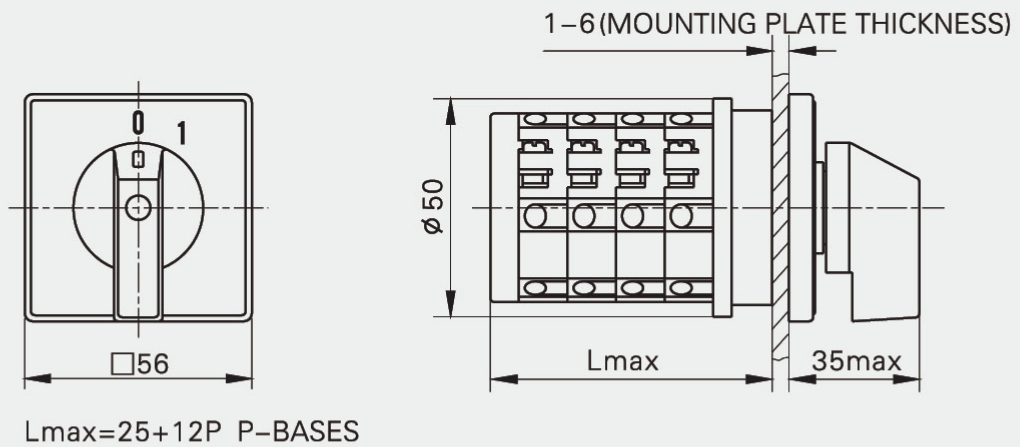
CCC CE CERTIFIED

Function: Ammeter, Voltmeter, OFF-ON, 0-1, 1-0-2, A-O-M, FOR-OFF-REV, O-Y-  $\Delta$  ,  $\Delta$  -Y-O-Y-  $\Delta$  , 0-1-Star, Multi-step switches and so on.

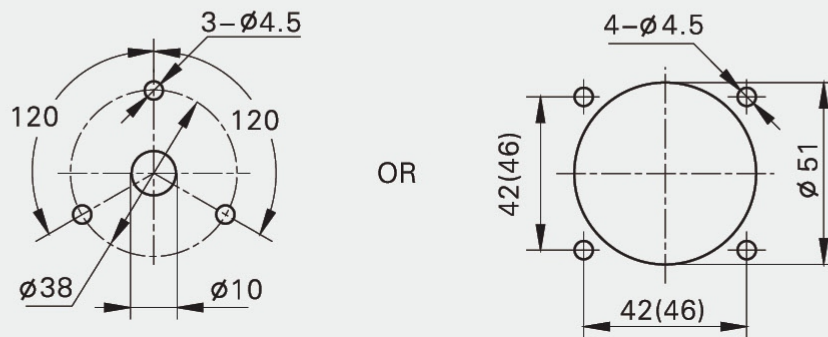
Description



## Dimension Installation Size



### OPTIONAL INSTALLATION







CA-16-3P-RST



CA-32-2P-01



CA-32-2P-102



CA-32-3P-01

Detail

CURRENT SCOPE: 12A 16A 20A 25A 32A 40A 63A 75A 125A 160A

MAX VOLTAGE : 690VAC

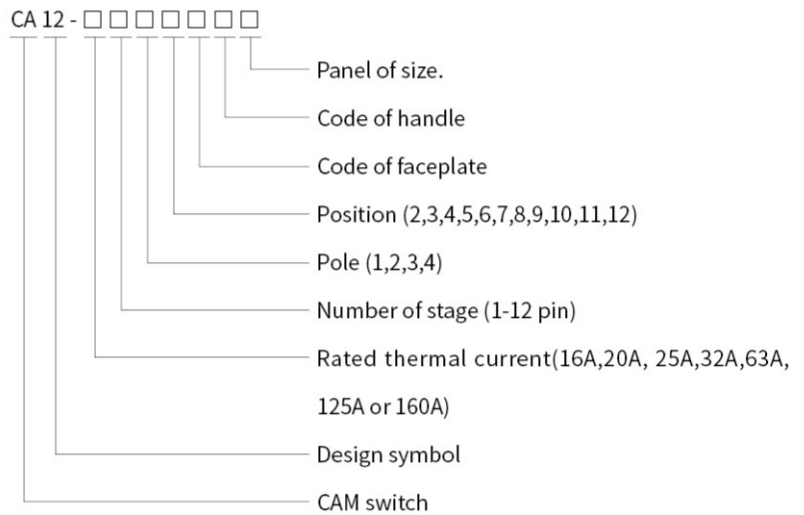
Poles: 1/2/3/4

Max pins: 12

CCC CE CERTIFIED

Function: Ammeter, Voltmeter, OFF-ON, 0-1, 1-0-2, A-O-M, FOR-OFF-REV, O-Y- $\Delta$ ,  $\Delta$ -Y-O-Y- $\Delta$ , 0-1-Star, Multi-step switches and so on.

Description





CA-50-2P-0-1



CA-75-4P-0-7



CA-125-4P-102



CA-200-4P-DELTA

**Outline and Installation Size**

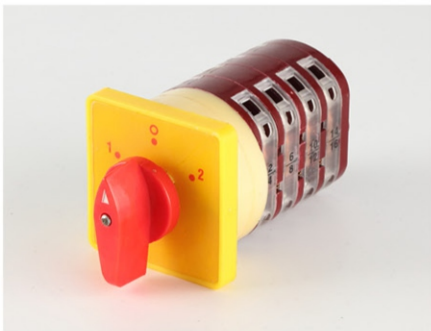
Type	Dimensions											
	Φ	A	B	C	D	E	F	G	H	I	L	
PL/PG	CA012	40	52	30	38.5	12	10	3.7	28			
	CA012	40	75	32	38.5	12	10	3.7	28			
	CA016	40	75	32	38.5	12	10	3.7	28			
	CA017	46	75	32	39.5	12	10	3.7	28			
	CA025	58	75	32	48	16.5	10	3.7	28			
	CA032	58	75	32	48	16.5	10	3.7	28			
	CA040	74	105	44	51	18	14	5.3	40			
	CA063	84	105	44	61.5	25	14	5.3	40			
	CA100	110	130	62	91	30	18			5.3	90	30
	CA200	110	130	62	100	39	18			5.3	90	30
	CA400	110	130	62	139	78	18			5.3	90	30
	CA630	110	130	62	178	117	18			5.3	90	30
3L/3N	CA012	40	75	32	38.5	12	10	3.7	28			
	CA016	40	75	32	38.5	12	10	3.7	28			
	CA017	46	75	32	39.5	12	10	3.7	28			
	CA025	58	75	32	48	16.5	10	3.7	28			
	CA032	58	75	32	48	16.5	10	3.7	28			
	CA040	74	105	44	51	18	14	5.3	40			
	CA063	84	105	44	61.5	25	14	5.3	40			
	CA100	110	130	62	91	30	18			5.3	90	30
	CA200	110	130	62	100	39	18			5.3	90	30



LW5D-16A-2P



LW5D-32A-2P



LW5D-40A-FP

**Detail**

CURRENT SCOPE: 16A 20A 32A 63A

MAX VOLTAGE : 690VAC

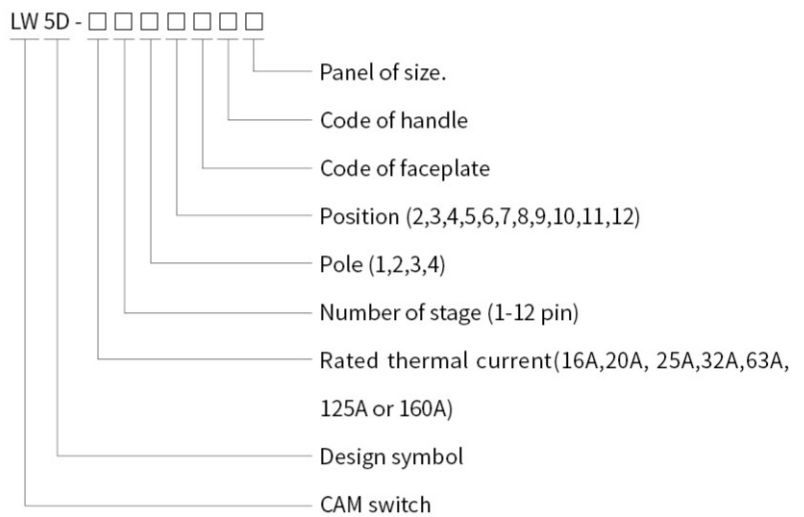
Poles: 1/2/3/4

Max pins: 12

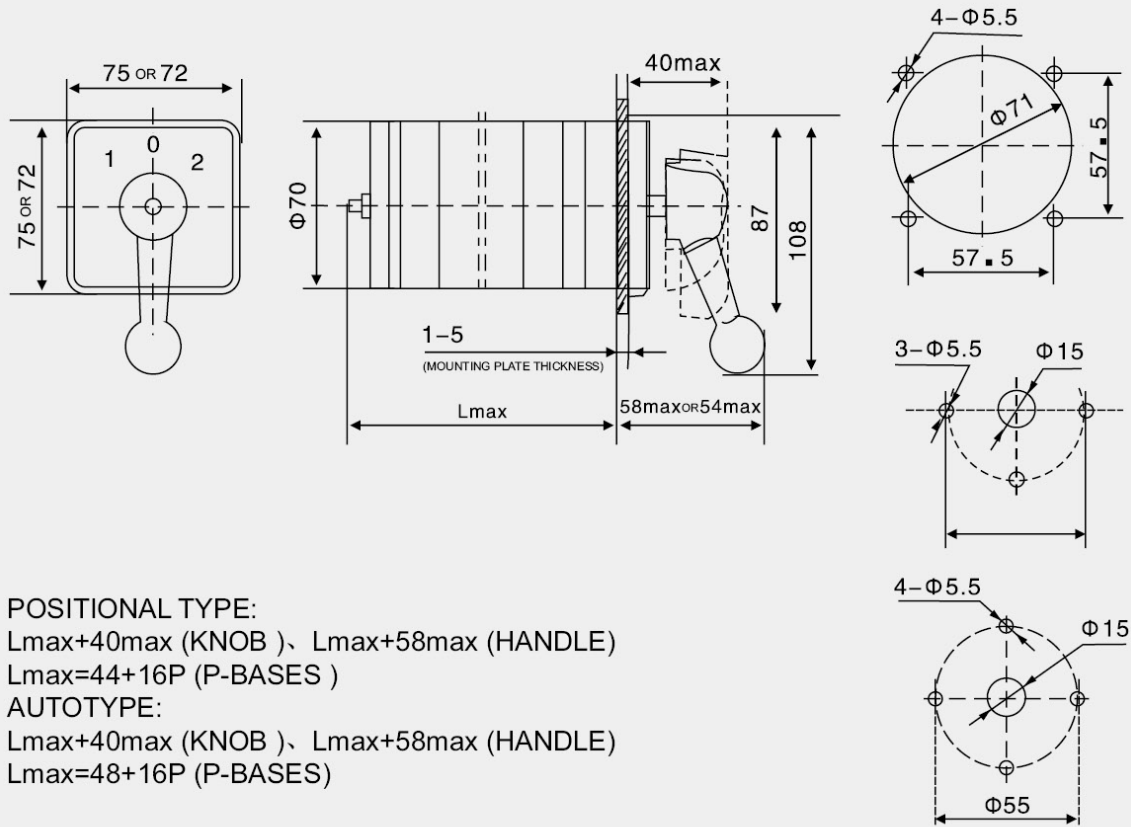
CCC CE CERTIFIED

Function: OFF-ON, 0-1, 1-0-2, A-O-M, FOR-OFF-REV, 0-1-Star, Multi-step switches and so on.

**Description**



### Dimension Installation Size



POSITIONAL TYPE:  
 $L_{max}+40_{max}$  (KNOB )、  $L_{max}+58_{max}$  (HANDLE)  
 $L_{max}=44+16P$  (P-BASES )  
 AUTOTYPE:  
 $L_{max}+40_{max}$  (KNOB )、  $L_{max}+58_{max}$  (HANDLE)  
 $L_{max}=48+16P$  (P-BASES)



EK-T-40A-2P-R



EK-T-63A-4P-R

Detail

CURRENT SCOPE: 25A 32A 63A 100A

MAX VOLTAGE : 690VAC

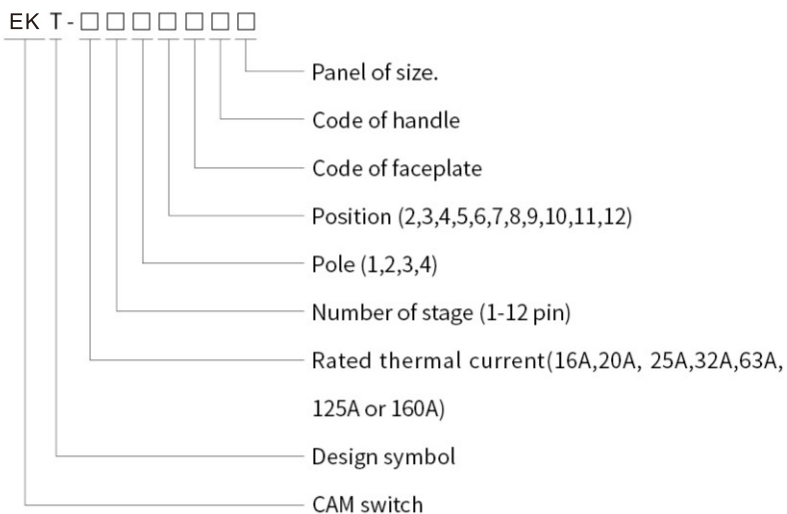
Poles: 1/2/3/4

Max pins: 12

CCC CE CERTIFIED

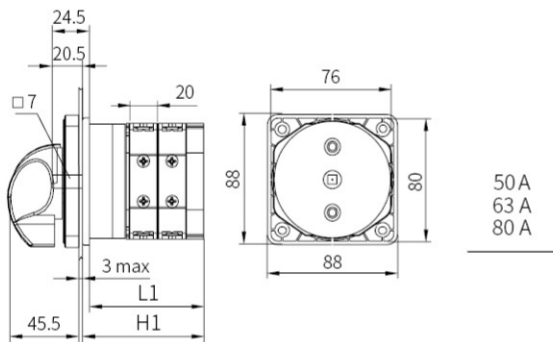
Function: Ammeter, Voltmeter, OFF-ON, 0-1, 1-0-2, A-O-M, FOR-OFF-REV, O-Y- $\Delta$ ,  $\Delta$ -Y-O-Y- $\Delta$ , 0-1-Star, Multi-step switches and so on.

Description



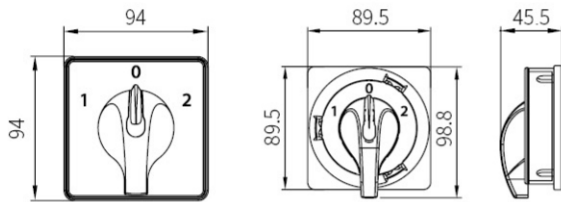
TYPE			T50	T63	T80	T100	T125	T175
Rated thermal Current	Ith	A	63	80	80	125	125	200
Rated Voltage	Ui	V	690	690	690	690	690	1000
Controll times		mm <sup>2</sup>	16/25 <sup>(1)</sup>	16/25 <sup>(1)</sup>	16/25 <sup>(1)</sup>	35/50 <sup>(1)</sup>	35/50 <sup>(1)</sup>	95
Controll frequency		mm <sup>2</sup>	10/16 <sup>(1)</sup>	10/16 <sup>(1)</sup>	10/16 <sup>(1)</sup>	16/35 <sup>(1)</sup>	16/35 <sup>(1)</sup>	95

## Dimensions(mm)

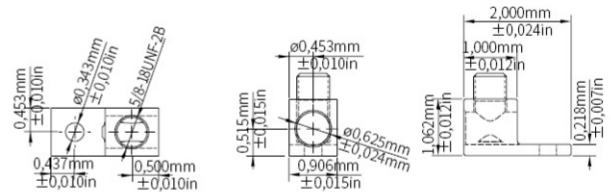


50 A  
63 A  
80 A

T Series	Floors	1 □	2 □	3 □	4 □
T50 T63 T80	L1	58.5	78.5	98.5	118.5
	H1	62.5	82.5	102.5	122.5

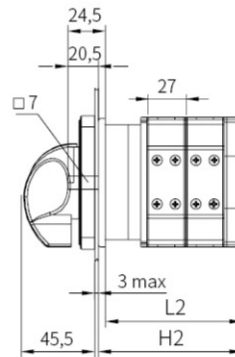


100 A  
125 A

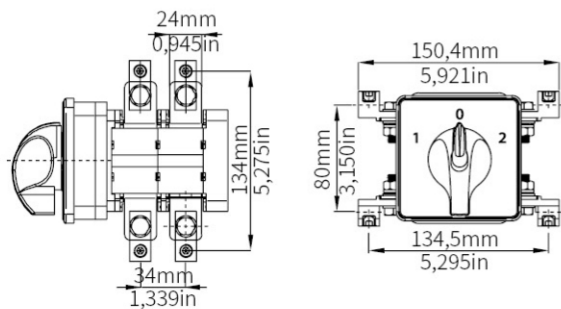


Cable measurement	Cables per terminal	Cable type	Kit Reference
120 mm <sup>2</sup> /250 kcmil	1	Cu	DS-TLU21 (2 piezas)

Note: The screws required for connection are provided in each package.



## UL Terminal LUG

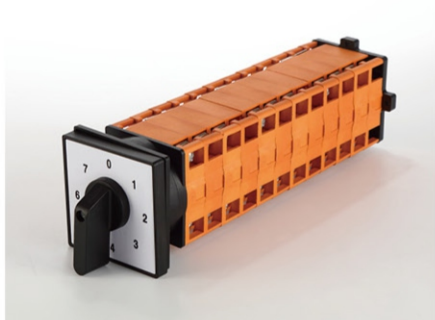


Flange type connection terminals for UL standard.

T Series	Floors	1 □	2 □	3 □	4 □
T100 T125	L2	67	94	121	148
	H2	71	98	125	152



OPVS-40-2P-102



OPVS-63-2P-102



OPVS-63-4P-0-7

**Detail**

CURRENT SCOPE: 25A 32A 63A 100A

MAX VOLTAGE : 690VAC

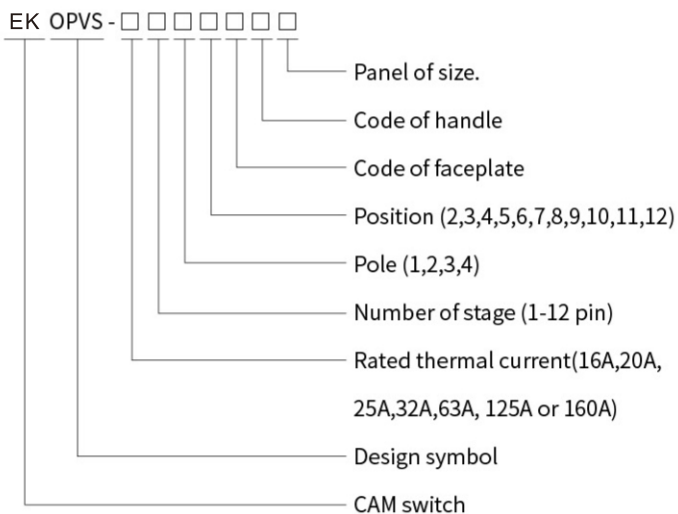
Poles: 1/2/3/4

Max pins: 12

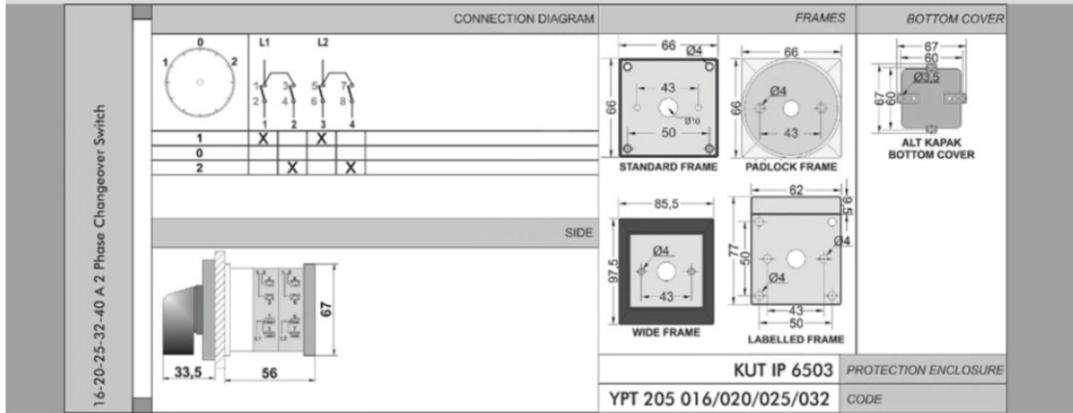
CCC CE CERTIFIED

Function: Ammeter, Voltmeter, OFF-ON, 0-1, 1-0-2, A-O-M, FOR-OFF-REV, O-Y- $\Delta$ ,  $\Delta$ -Y-O-Y- $\Delta$ , 0-1-Star, Multi-step switches and so on.

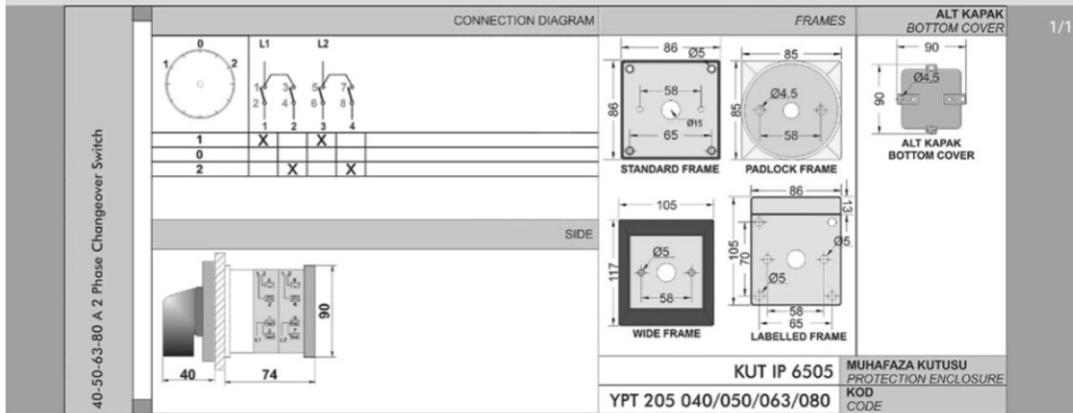
**Description**



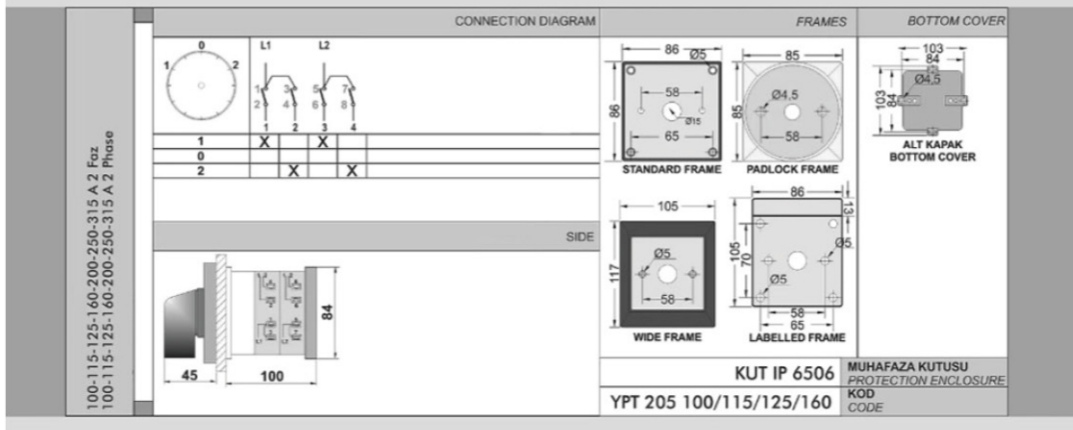
## 2 Phase 16-20-25-32 Amp Change Over



## 2 Phase 40-50-63-80 Amp Change Over



## 2 Phase 100-125-160-250-315 Amp Change Over







PAKO-50-3P-0-5



PAKO-63-2P-0-3



PAKO-80-4P-102D1

**Detail**

CURRENT SCOPE: 20A 25A 32A 63A 100A

MAX VOLTAGE : 690VAC

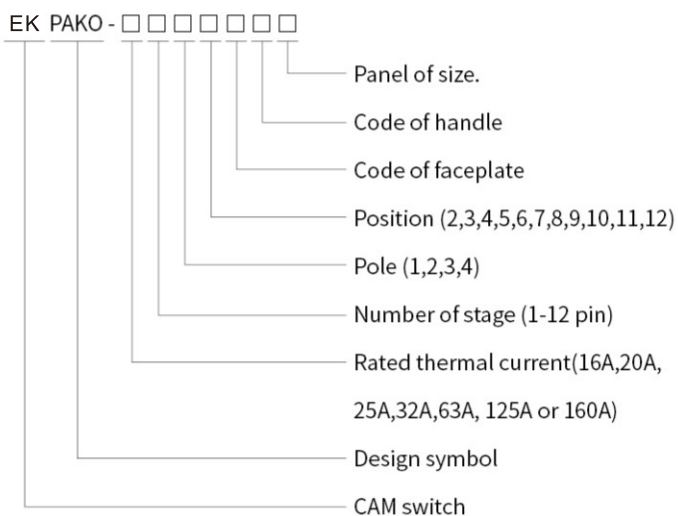
Poles: 1/2/3/4

Max pins: 12

CCC CE CERTIFIED

Function: Ammeter, Voltmeter, OFF-ON, 0-1, 1-0-2, A-O-M, FOR-OFF-REV, O-Y- $\Delta$ ,  $\Delta$ -Y-O-Y- $\Delta$ , 0-1-Star, Multi-step switches and so on.

**Description**



**PN343**

	1	3	5	7	9	11
<b>POZİSYON / POSITION</b>	2	4	6	8	10	12
0						
1	X					
2		X				
3			X			
4				X		
5					X	

**PN341**

	1	3	5	7
<b>POZİSYON / POSITION</b>	2	4	6	8
0				
1	X			
2		X		
3			X	

**PN345**

	1	3	5	7	9	11	13	15
<b>POZİSYON / POSITION</b>	2	4	6	8	10	12	14	16
0								
1	X							
2		X						
3			X					
4				X				
5					X			
6						X		
7							X	

**PN311**

	1	3	5	7
<b>POZİSYON / POSITION</b>	2	4	6	8
1	X		X	
0				
2		X		X

Outline Dimension and Installation Dimension



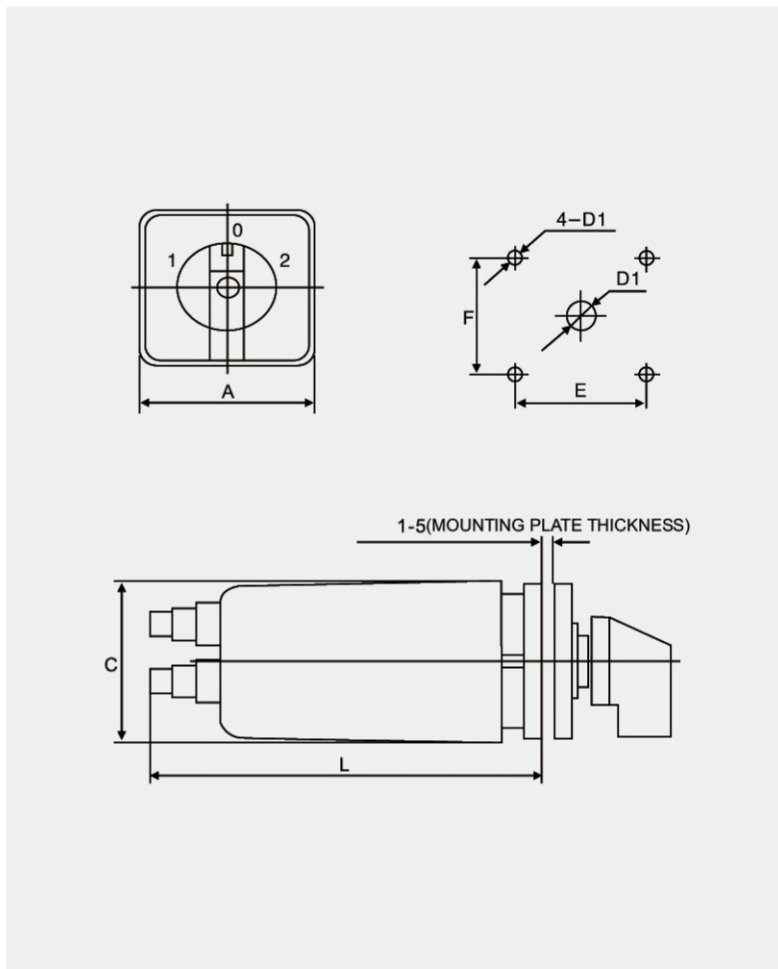
LW26-20-2P-102-GS



LW26-20-2P-102-R

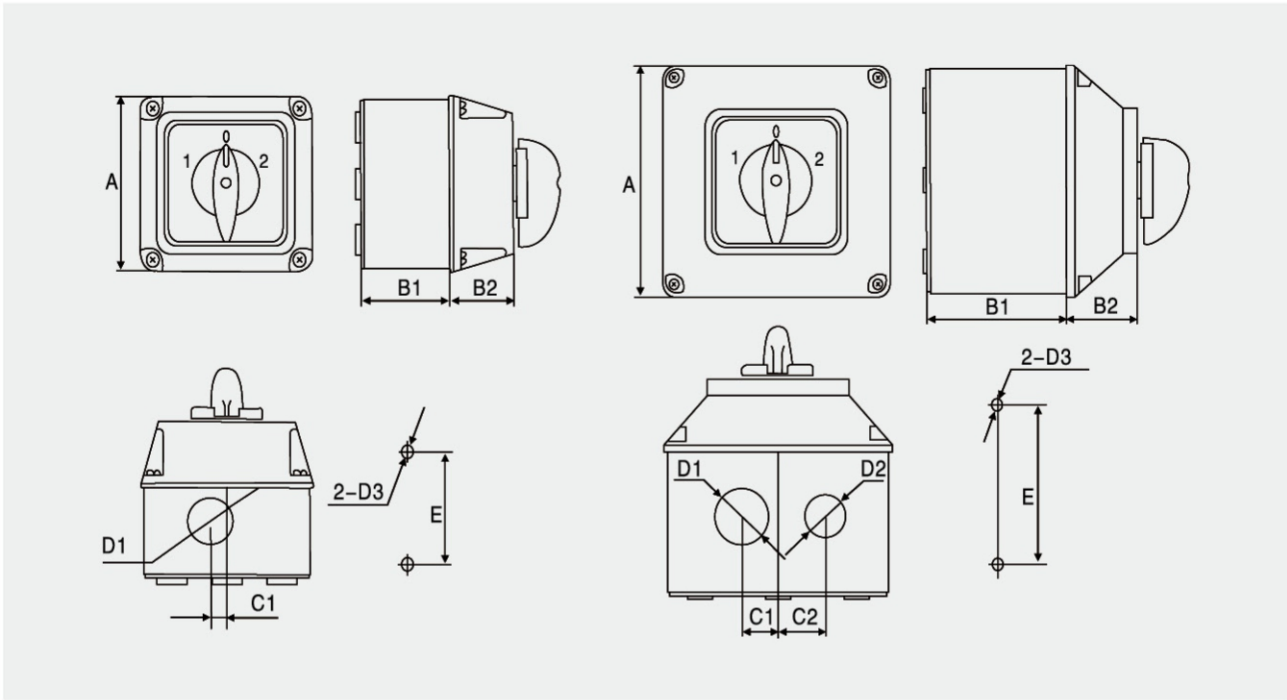


LW26-63-3P-102-GS



Model specification	Dimensions			Installation size				节数
	A	C	C	E	F	D1	D2	
LW26-20	□ 48	50	67.5	36	36	φ8.5	φ4.5	1-3
LW26-20	□ 48	50	67.5	36	36	φ8.5	φ4.5	1-6

### Protective Casing IP65



### Technical Parameter

TYPE	OUTLINE SIZE							DIMENSION		PINS	PS
	A	B1	B2	C1	C2	D1	D2	D3	E		
LW26-20	□ 68.5	35.5	25.5	6.5		φ18		φ5	44	1-2	
LW26-20	□ 68.5	45	25.5	6.5		φ18		φ5	44	1-3	
LW26-20	□ 68.5	35.5	32.5	6.5		φ18		φ5	44	1	Single hole
LW26-20	□ 68.5	45	32.5	6.5		φ18		φ5	44	1-2	Single hole
LW26-20	□ 68.5	55	25.5	6.5		φ18		φ5	44	1-4	
LW26-20	□ 68.5	55	32.5	6.5		φ18		φ5	44	1-3	Single hole
LW26-20	□ 113	70.5	35.5	18	23.5	φ27	φ21	φ5	78	1-7	
LW26-25	□ 68.5	35.5	25.5	6.5		φ18		φ5	44	1	
LW26-25	□ 68.5	45	25.5	6.5		φ18		φ5	44	1-2	
LW26-25	□ 68.5	35.5	32.5	6.5		φ18		φ5	44	1	Single hole
LW26-25	□ 68.5	45	32.5	6.5		φ18		φ5	44	1	Single hole
LW26-25	□ 68.5	55	25.5	6.5		φ18		φ5	44	1-4	
LW26-25	□ 68.5	55	32.5	6.5		φ18		φ5	44	1-2	Single hole
LW26-25	□ 113	70.5	35.5	18	23.5	φ27	φ21	φ5	78	1-5	
LW26-32	□ 113	70.5	35.5	18	23.5	φ27	φ21	φ5	78	1-4	
LW26-63	□ 113	70.5	35.5	18	23.5	φ27	φ21	φ5	78	1-2	
LW26-125	□ 113	70.5	35.5	18	23.5	φ27	φ21	φ5	78	1-4	
LW26-160	□ 113	70.5	35.5	18	23.5	φ27	φ21	φ5	78	1-2	



CA-32-3P-102-S31



CA-63-3P-DELTA-S40

S31

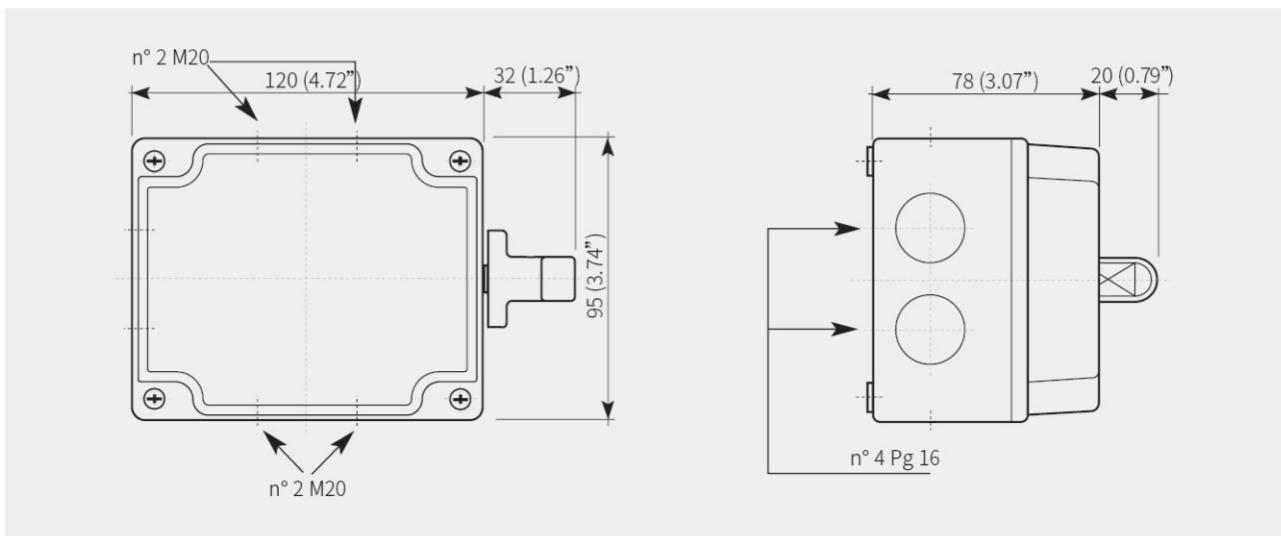
Lateral lever drive



S31

120 x 95 x 78 mm  
4.72 x 3.74 x 3.07 in

abs, IP65.  
4xM20 knock-outs on two sides,  
4xPg16 on one side and on the  
bottom of the enclosure



# S31/S40 CA

CAM Switch with Protective Box(Protective Box)

## S40

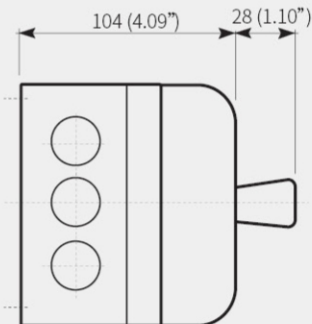
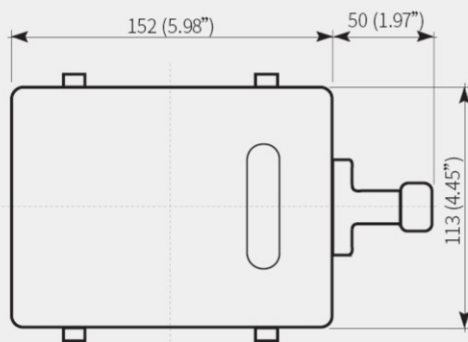
Lateral lever drive



S40

152 x 113 x 104 mm  
5.98 x 4.45 x 4.09 in

abs, IP40.  
3 holes  $\phi$ 19 mm (0.75")  
with rubber grommet



Outline Dimension and Installation Dimension



LW30-20-4-GSC



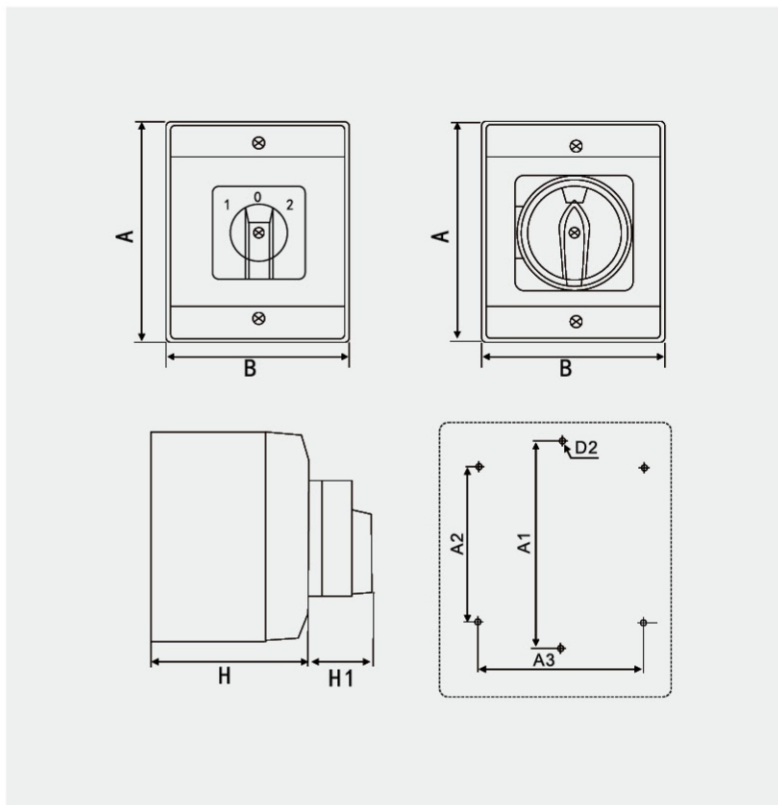
LW30-32-3-GSC



LW30-63-3-GSC



LW30-100-3-GSC



TYPE	OUTLINE SIZE				DIMENSION			
	A	B	H	H1	D2	A1	A2	A3
LW30-16/20	100	80	65	35	φ4.5	92	60	60
LW30-25/32/40	125	100	85	35	φ4.5	115	90	90
LW30-63/80/100								
LW30-16/20	100	80	65	35	φ4.5	92	60	60
LW30-25/32	125	100	85	35	φ4.5	115	80	80
LW30-40/63	175	115	100	35	φ4.5	165	90	90
LW30-80/100	240	160	85	35	φ4.5		193	142

Tel-  
0086-577-62780116

Fax-  
0086-577-62774090

Email-  
info@etek-china.com

No. 288 Wei 17th Road,  
Economic Development Zone,  
Yueqing City Zhejiang China.

**ETEK**<sup>®</sup>  
E TEK ELECTRIC

ZHEJIANG ETEK  
ELECTRICAL TECHNOLOGY CO.,LTD.

